

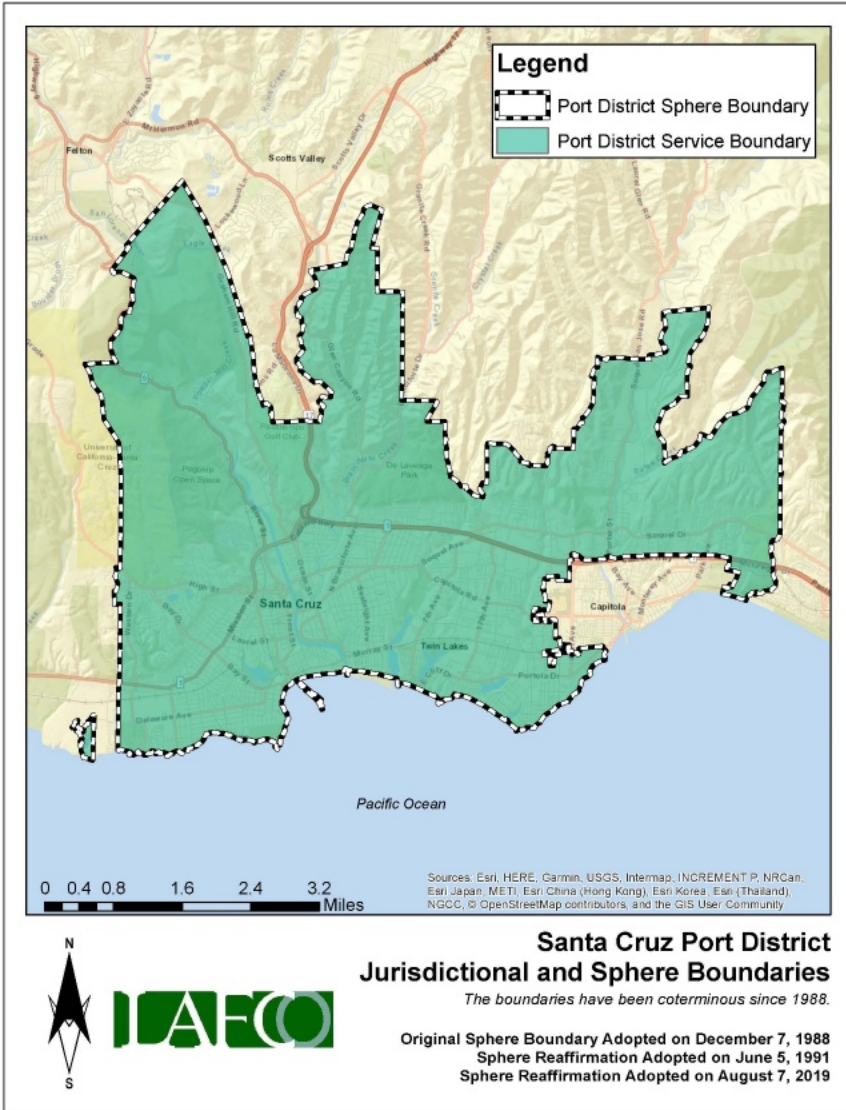
Santa Cruz Port District (Draft MSR)

July 23, 2024



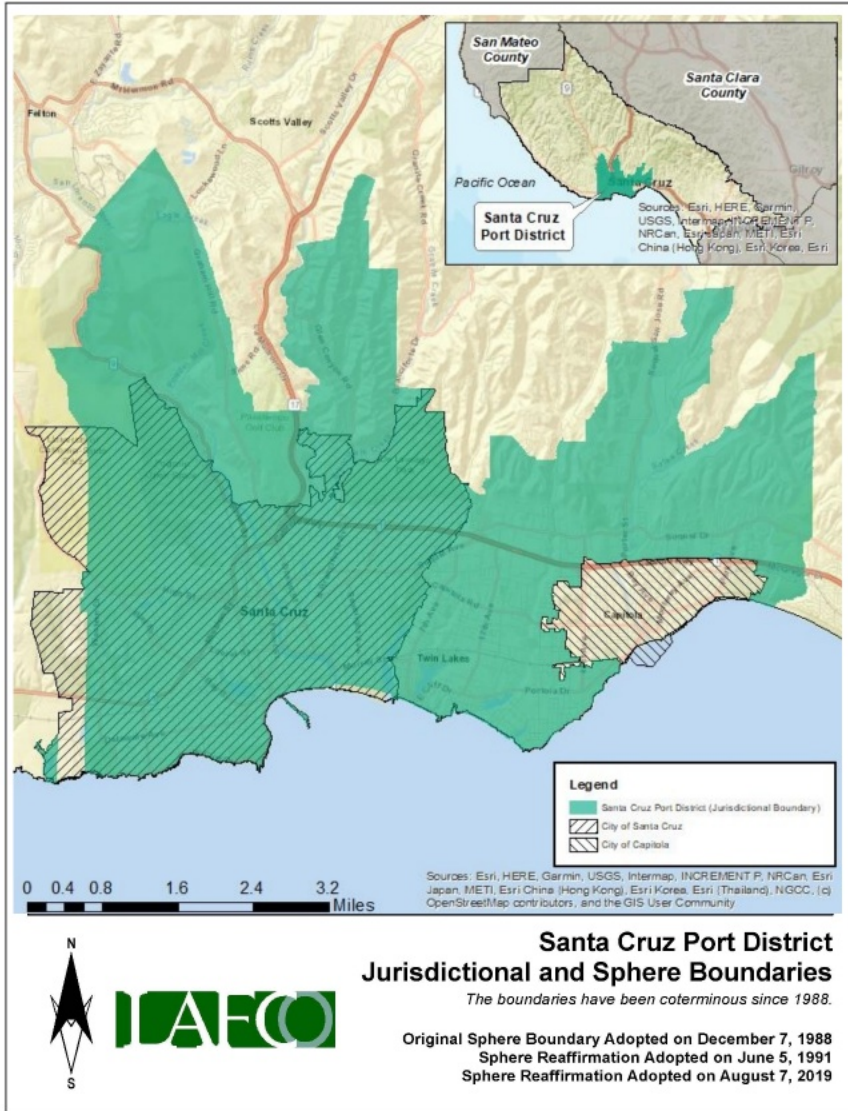
Key Findings

- 1) District provides services to all guests**
(Serves population beyond its jurisdiction)
- 2) District is financially sound**
(annual surplus since 2013)
- 3) District has a multi-agency joint agreement**
(includes County and City of Santa Cruz)
- 4) District operates a transparent website**
(website meets all benchmarks)
- 5) District needs a sphere update**
(current sphere excludes part of city)



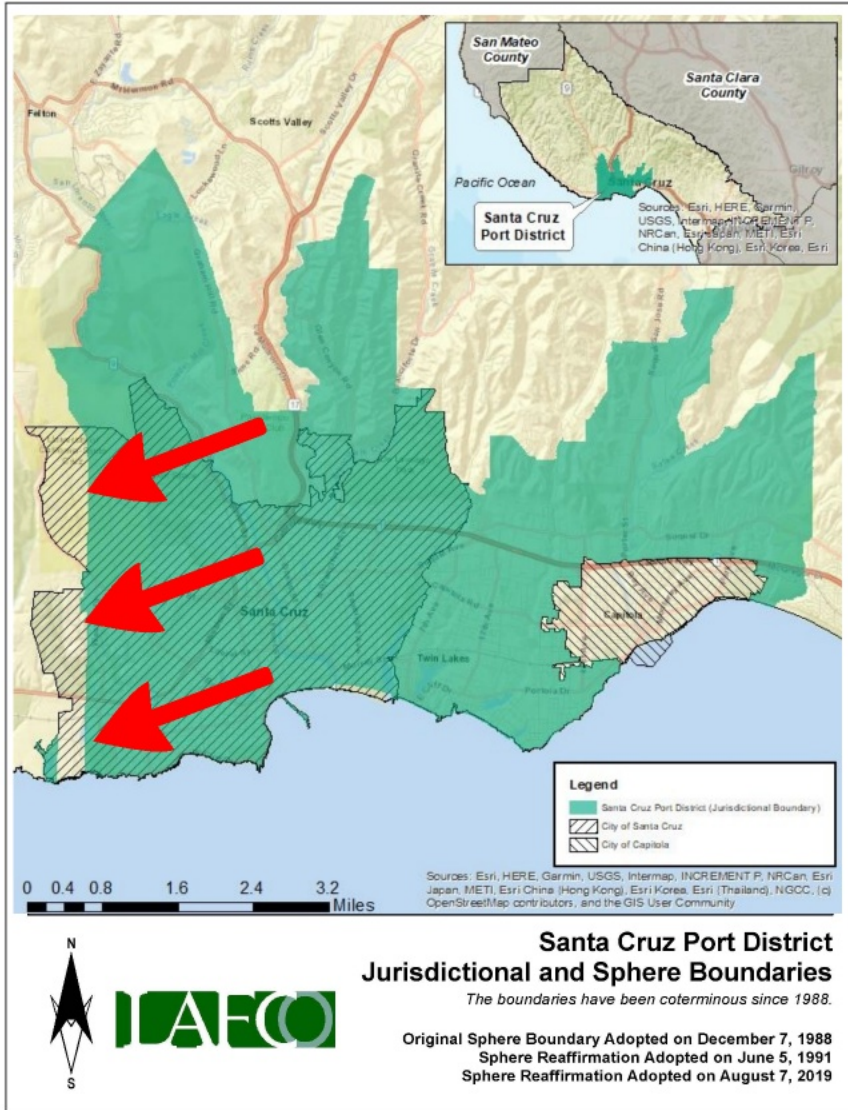
Key Findings

- 1) District provides services to all guests**
(Serves population beyond its jurisdiction)
- 2) District is financially sound**
(annual surplus since 2013)
- 3) District has a multi-agency joint agreement**
(includes County and City of Santa Cruz)
- 4) District operates a transparent website**
(website meets all benchmarks)
- 5) District needs a sphere update**
(current sphere excludes part of city)



Key Findings

- 1) District provides services to all guests**
(Serves population beyond its jurisdiction)
- 2) District is financially sound**
(annual surplus since 2013)
- 3) District has a multi-agency joint agreement**
(includes County and City of Santa Cruz)
- 4) District operates a transparent website**
(website meets all benchmarks)
- 5) District needs a sphere update**
(current sphere excludes part of city)



Key Findings

- 1) District provides services to all guests**
(Serves population beyond its jurisdiction)
- 2) District is financially sound**
(annual surplus since 2013)
- 3) District has a multi-agency joint agreement**
(includes County and City of Santa Cruz)
- 4) District operates a transparent website**
(website meets all benchmarks)
- 5) District needs a sphere update**
(current sphere excludes part of city)

