



Harbor News & Updates

April 2022

Patrol Boat Dedication Ceremony

Save the Date!

The Port District will be hosting a dedication ceremony for its new patrol boat on Friday, May 20, 2022, at 3:00 PM.



In-Person Meetings to Resume April 26

The Santa Cruz Port Commission will resume in-person meetings for its upcoming regular public session on April 26, 2022.

Please join us at 7:00 pm in the Harbor Public Meeting Room at 365A Lake Avenue to stay informed of harbor happenings.

The agenda and supplemental meeting information will be posted on the District's [website](#) on Thursday, April 21.

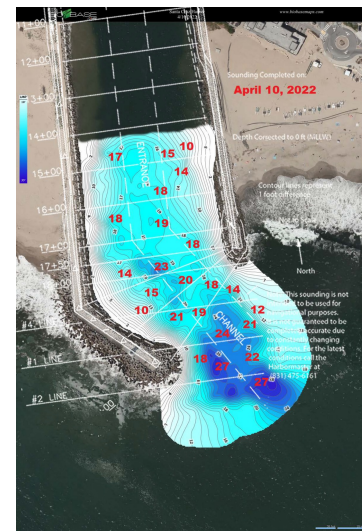
Welcome Jillian, the District's new Administrative Services Manager!

The Santa Cruz Port District is pleased to announce Jillian Ritter as the new Administrative Services Manager. Jillian grew up in Santa Cruz and most recently worked for the County of Santa Cruz in a number of roles, including Chief of Administrative Staff for the Board of Supervisors and staffer for Third District Supervisor Ryan Coonerty.

Jillian began working for the Port District in January and has been settling into her new role.

As Administrative Services Manager, Jillian will oversee the administrative functions of the District, including human resources, finance, purchasing, property management, information technology, and environmental compliance.

Entrance Sounding

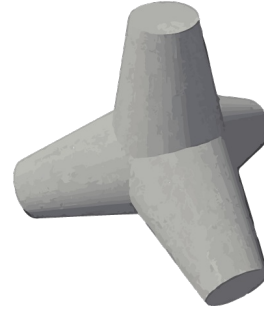


Check out the latest entrance sounding! A big thank you to the dredge crew for their hard work this season. Dredging will conclude on April 30, 2022.



Fun Fact

The east and west jetties are comprised of concrete tetrapods. Did you know that one tetrapod weighs just under 28 tons!?



National Safe Boating Week: May 21-27

Join the Port District in promoting safe boating during [National Safe Boating Week](#) at the Santa Cruz Harbor launch ramp.

Stay tuned for more information!

Opening of Recreational Salmon Season

Recreational salmon season opened on Saturday, April 2, 2022, from Point Arena to the U.S./Mexico Border (San Francisco and South). The season end date will be determined at the Pacific Fishery Management Council's April meeting.

[Read More](#)



Operation Safe Salmon 2022

The U.S. Coast Guard will conduct Commercial Fishing Vessel safety spot checks and dockside safety exams April 26 through 28. This outreach effort is part of "Operation Safe Salmon," which is conducted prior to the local commercial salmon fishery season to enhance the safety of the West Coast salmon fleet.

[Read More](#)

Reminder!

Forgot your bag? Pet waste bag stations are located throughout the harbor for your convenience.

We're Hiring for Harbor Dredge Worker I

Santa Cruz Harbor is seeking a part-time, temporary employee to assist with seasonal maintenance duties from May – September 2022.

Applicants must be willing to perform manual labor, chipping, and painting and possess a valid California driver's license. Candidates must be comfortable working in a marine environment over and in the water, and on boats and docks. Work hours may vary depending on operational needs.

[Apply Now!](#)



Sign Up for AutoPay

Sign up for Auto Pay and pay your Port District bill automatically each month!

[Sign Up!](#)

Channel Navigation

In preparation for a busy boating season, Port District staff would like to remind boaters of the rules governing vessel traffic within the harbor channel. The [Inner-Harbor Vessel Traffic brochure](#), which provides a comprehensive listing of the Rules Governing Inner-Harbor Vessel Traffic, is summarized below:

- The speed limit within the harbor is 5 MPH.
- Sailboats may tack across the channel, even if such tacking places the vessel in violation of the "keep-to-the-right" rule
- Sailboats in violation of the "keep-to-the-right" rule while tacking across the harbor channel shall yield to oncoming vessels.
- All vessels crossing the main harbor channel, or leaving a fairway, shall yield to any vessel transiting the main channel.
- Paddlers must keep to the right at all times, and no more than two abreast. A paddler may choose to cross over to the opposing side of the channel to exit or enter the harbor entrance.
- Human-powered watercraft are not allowed in the launch ramp area at any time, or operate in fairways and other prohibited areas ([see maps](#)).
- Paddlers are advised to stay well clear of aerators, which can present a danger whether or not they are in operation.
- Please observe the signs! Swimming and prone paddling in the harbor is prohibited.
- While on the water, please observe these "rules of the road" and have a safe and enjoyable boating season.



[Read More](#)

Santa Cruz Port District | 135 5th Avenue, Santa Cruz, CA 95062

[Unsubscribe scpd@santacruzharbor.org](mailto:scpd@santacruzharbor.org)

[Update Profile](#) | [Constant Contact Data Notice](#)

Sent by scpd@santacruzharbor.org powered by



Try email marketing for free today!