



Santa Cruz Port District  
Newsletter - November 2020

## Announcements

### ATTENTION!

## PROOF OF INSURANCE REQUIRED TO PICK UP 2021 PARKING STICKERS



In accordance with Port District Ordinance Section 316, all slip licensees will be required to provide proof of current vessel insurance in order to receive 2021 parking stickers.

Don't delay, contact your vessel insurance agent today!

To view the District's vessel insurance policy requirement or to submit your current insurance certificate electronically please visit the Port District's [website](#).

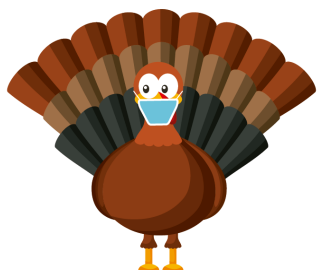
### Resuming Regular Office Hours

The harbor office resumed regular operating hours on November 1, 2020, and is once again open daily from 9:00 AM to 5:00 PM. Please respect social distancing guidelines! Customers must wear a mask and the customer service counter is limited to serving one person at a time.

### Holiday Schedule

The harbor office will be closed at 12:30 PM on Wednesday, November 25. The office will remain closed on Thursday, November 26, and resume regular operating hours on Friday, November 27, at 9:00 AM.

### Happy Thanksgiving!



### 2020 Lighted Boat Parade: *Postponed until 2021*

After reviewing guidelines for public gatherings, the Santa Cruz Yacht Club has announced this year's Lighted Boat Parade has been postponed until 2021. In their announcement, SCYC noted, "It was not an easy decision but keeping safety in mind as the top priority, it is the most socially responsible choice in this unprecedented time." This year, SCYC's theme is "Santa Cruz Strong" to show support and gratitude for our healthcare, frontline, and emergency workers.

Spread holiday cheer by decorating your boat with lights and receive an electricity credit for the month of December.



Employment Opportunity

Crab Season

Santa Cruz Port District is seeking a part-time, employee to assist with various duties at the Santa Cruz Harbor Boatyard. Hourly Pay Rate \$13.00 to \$17.50 / hour, depending on qualifications and experience

Visit the District's [website](#) for more information.

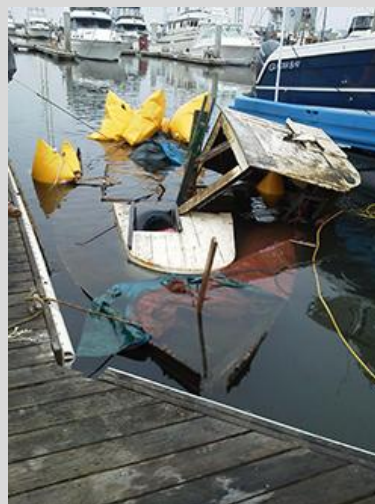
The recreational fishery for Dungeness crab is scheduled to open on November 7, 2020. For more information please visit the California Department of Fish and Wildlife [website](#).

## Need to Surrender Your Vessel?

[Division of Boating & Waterways](#)' SAVE Program:

The Surrendered and Abandoned Vessel Exchange (SAVE) program provides an alternative for boat owners to surrender unwanted recreational vessels to participating local public agencies, in lieu of abandonment. The Port District currently has grant funding available and is accepting a limited number of vessels to participate in the program. The following criteria apply:

- **Only** recreational vessels are eligible (no commercial vessels)
- Vessel can be berthed in the water or brought to the harbor via trailer.
- Vessel does not have to be currently registered.
- **Registered vessel owner** must be present at time of turn-in.



For additional information on this no-cost disposal program, please contact Assistant Harbormaster Sean Rothwell at (831) 475-6161 or [srothwell@santacruzharbor.org](mailto:srothwell@santacruzharbor.org).

## Celebrating 30-Years of Service!

Please join us in congratulating Senior Deputy Harbormaster Don Kinnamon on achieving 30 years of service with the Santa Cruz Port District. Over the last 30 years, Don has saved countless lives in his search and rescue role with Harbor Patrol and he continues to provide unparalleled customer service to the boating community.

Don continues to be an amazing ambassador for the harbor and we look forward to his continued success within the organization!

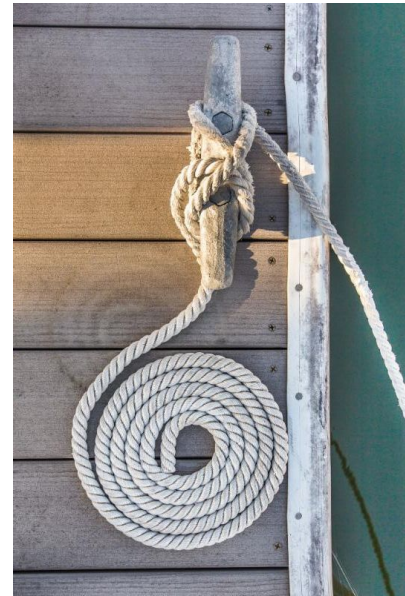




## Winterize Your Boat

As winter weather approaches, boaters are reminded to visit your boat before the next storm and frequently throughout the season. If you can't check your boat, find a responsible person who can. Here are some helpful reminders to stay safe this winter:

- Check your dock lines.
- Tie lines securely to cleats; consider chafing gear and doubling-up lines.
- Replace your worn lines.
- Test your bilge pump to ensure that it's working properly and free of debris.
- Be sure limber holes and scupper drains aren't blocked.
- Have an adequate number of appropriate-sized fenders.
- Store or tightly secure all sails, roller furlings, rigging, tarps, loose gear on deck.
- Close and secure hatches, ports, and windows. Make sure they're watertight.
- Make sure appliances like space heaters are not left unattended.
- Update your email address and emergency contact phone numbers with the harbor office.



## 2020-21 Dredging Season Update

### North Harbor Dredging

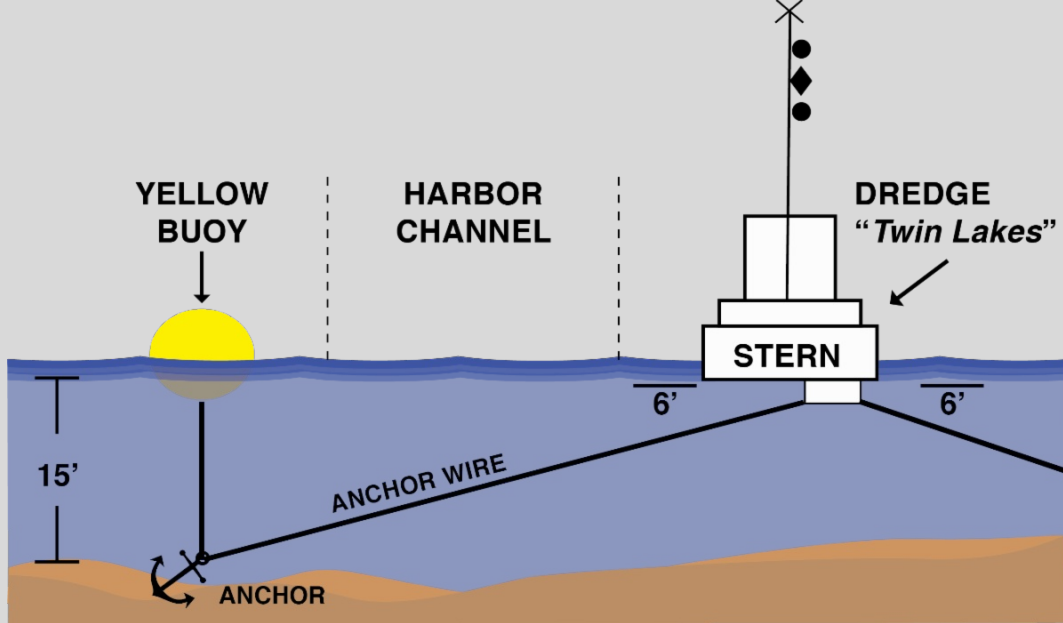
North harbor dredging commenced on October 2, 2020. The crew has made significant progress deepening the north harbor turning basin and will continue dredging up the X/J channels (to the culverts) in the coming weeks.

To view the areas proposed for dredging and the anticipated pipeline configuration in the north harbor, please [click here](#).

### Entrance Channel Dredging Begins for the Season

*Twin Lakes* and crew began seasonal dredging of the entrance channel on Monday, November 2, 2020. The typical dredge schedule is Monday – Thursday.

Long time harbor mariners know the drill! Entrance conditions are changeable. Be sure to check weather and tide conditions and the latest [entrance sounding](#) prior to transiting the entrance. Know what your vessel draws and adjust for tide conditions! Remember that entrance soundings are adjusted to mean lower low water. When the dredge is operating, hail the crew on VHF channel 8 for passing instructions and proceed cautiously to avoid collision with dredge system equipment and anchor wires.



Dredge "Twin Lakes" - Looking South  
Typical Mooring Configuration  
(NOT TO SCALE)

