



## In This Issue

[Launch Ramp Closure](#)

[Announcements](#)

[Entrance Sounding](#)

[Employment Opportunity](#)

[Water Taxi Operation](#)

[Commission Meeting Schedule](#)

[Fuel Prices](#)

## NEWSLETTER

May 2016

### DREDGE DELIVERY & LAUNCH RAMP CLOSURE

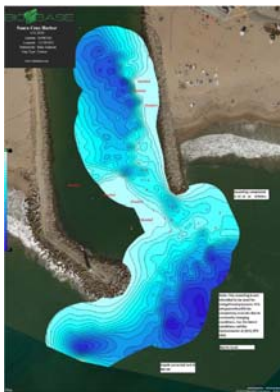
Construction of the Port District's new dredge (to be named *Twin Lakes*) has been completed by DSC Dredge Company of Reserve, Louisiana. As of May 24, 2016, the disassembly process is underway and plans are being finalized for delivering and assembling the new dredge at the Santa Cruz Harbor.

The Port District anticipates the arrival of its new dredge commencing on June 13, 2016. Staging and assembly of the new dredge will take place in the launch ramp area. **The launch ramp and adjoining parking areas will be closed for the duration of the build.**

As a result of the launch ramp closure, the Port District will be offering a "Dredge Delivery" visitor berthing special to all trailerable vessels. For only \$150, berth your vessel on an end-tie for the duration of the launch ramp closure, which is currently expected to last 10 days. If the closure is extended, your berthing is extended too for no additional cost! Launch fee and parking are included!

Promotional pricing will begin on Friday, June 10, 2016. Reservations will be accepted. Vessels without a reservation will be assigned end-tie space on a first-come, first-served basis until Sunday, June 12, 2016. Please note that retrieval of your vessel (haulout) may be delayed depending on the dredge construction schedule - there will be no additional charge for extended stays due to dredge construction.

### ENTRANCE SOUNDING



[Download Current Entrance Sounding](#)

### EMPLOYMENT OPPORTUNITY

The Port District is currently recruiting for the following position:

### ANNOUNCEMENTS

#### SAFE BOATING WEEK

As a kick-off to National Safe Boating Week, Senior Deputy

### **Parking Coordinator**

For a complete job description and application material, please visit the Port District's [website](#).

### **WATER TAXI OPERATION**

The free inner-harbor water taxi is set to begin operation over Memorial Day Weekend! Beginning Saturday, May 28, 2016, the water taxi will be operating on weekends and holidays from 11 AM to 6 PM. In addition to weekend service, the water taxi will operate on Thursday evenings during the Crow's Nest's beach barbecues from 5 PM to 9:30 PM.

Passengers may be picked up and dropped off at the following locations:

- X-1 gate
- AA-dock (Aldo's)
- Launch ramp

### **PORT COMMISSION MEETING SCHEDULE**

#### **JUNE**

Regular Public Session  
Tuesday, June 28, 2016  
7 PM

#### **JULY**

Regular Public Session  
Tuesday, July 26, 2016  
7 PM

### **CURRENT FUEL PRICING**

Gasoline: \$3.05  
Diesel: \$2.55  
Commercial: \$2.45

Harbormaster Don Kinnamon and Deputy Harbormaster David Hill visited Mintie White Elementary School in Watsonville to share information about the harbor, explain the duties of a Deputy Harbormaster, and distribute educational material on the importance of ocean / water safety. All of the students received their "Junior Deputy Harbormaster" badge!



Pictured: Ms. Hutchinson's 2nd Grade Class -Mintie White Elementary.

### **2ND ANNUAL MONTEREY BAY LEUKEMIA CUP**

The Santa Cruz Yacht Club is hosting its 2nd annual Monterey Bay Leukemia Cup on Saturday, June 4, 2016. Proceeds from the event will benefit blood cancer research through the Leukemia and Lymphoma Society.

For additional details and registration information, please click [here](#).

### **3rd ANNUAL CLASSIC CAR SHOW**

Mark your calendars! The 3rd annual Santa Cruz Harbor Classic Car and Truck Show will take place on Sunday, October 9, 2016. To register for this year's event, [click here](#).

