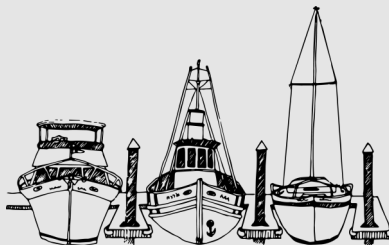


SANTA CRUZ PORT DISTRICT
135 5th Avenue
Santa Cruz, CA 95062
831.475.6161
scpd@santacruzharbor.org
www.santacruzharbor.org



PORT COMMISSIONERS
Toby Goddard
Dennis Smith
Reed Geisreiter
Stephen Reed
Darren Gertler

HARBOR NEWS

SANTA CRUZ SMALL CRAFT HARBOR

FALL 2024



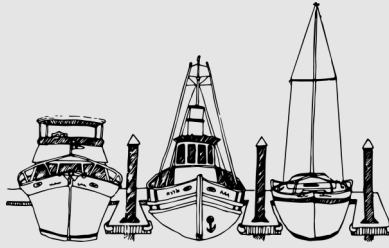
MURRAY STREET BRIDGE SEISMIC RETROFIT & BARRIER REPLACEMENT PROJECT

The City of Santa Cruz opened bids for the Murray Street Bridge Seismic Retrofit and Barrier Replacement Project on Thursday, September 12, 2024. Two bids were submitted, with Shimmick Construction submitting the lowest bid in the amount of \$45,413,546.

While this project has been in the works for some time, the City anticipates commencing work in early 2025. The project will have considerable impacts on the harbor area, but the Port District and City are committed to collaborating closely with stakeholders throughout the process.

Additional information regarding work that will be performed by the Port District as part of this project (mainly the reconstruction of FF-Dock), will be available soon.

For more information on the City's project, please visit the City's Public Works [webpage](#).



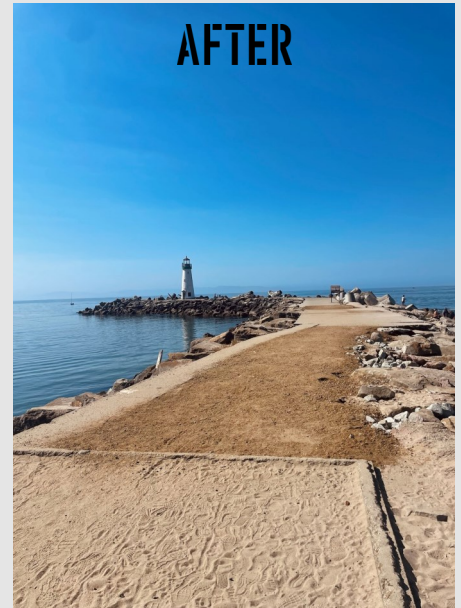
PROJECT CORNER

WEST JETTY WALKWAY REPAIRS

Maintenance staff recently completed repairs to the storm-damaged sections of the West Jetty Walkway, which greatly improved the walkability of the path.



BEFORE



AFTER

WEST SIDE SINKHOLE REPAIRS

The Port District awarded a contract to Osmun Construction for the repair of a sinkhole on the west side of the harbor near FF-Dock, in an amount not to exceed \$80,000.

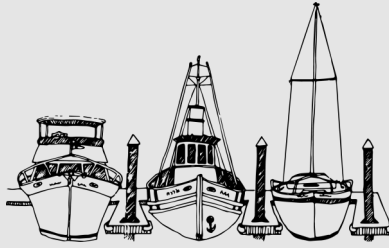
To repair the sinkhole, Osmun Construction drilled angled and vertical holes along the void to allow for compaction grouting. Additionally, the area was regraded and paved to facilitate proper drainage, reducing future runoff. The project was completed on July 12, 2024.

NORTH HARBOR TRANSFORMER REPLACEMENT PROJECT

At its regular public meeting on May 28, 2024, the Santa Cruz Port Commission awarded a contract to Anderson Pacific Engineering Construction, Inc. for the North Harbor Transformer Replacement Project in an amount not to exceed \$1,335,250.

The project, which is currently underway, will relocate 6 north harbor dockside transformers to a landside location (above anticipated flood zone) to prevent future water inundation to each unit in the event of another tsunami event. Electrical conductors will be rerouted through new and existing conduits to provide service to existing docks.

This project will improve reliability and safeguard critical harbor utilities from future power disruptions, enhancing the resilience of the Santa Cruz Harbor for years to come.



PROJECT CORNER

**METAL CANOPY
STRUCTURE
PROJECT**

In preparation for the Murray Street Bridge Seismic Retrofit and Barrier Replacement Project, the Port District will be relocating approximately 45 kayaks and rowing shells from the area near FF-Dock. To facilitate the required vessel relocations, the Port District recently awarded a contract for the construction of a permanent, pre-engineered metal canopy structure with kayak racks, in the area of A-Dock (adjacent to existing rack storage).

The contractor began staging in the area on Thursday, October 10, 2024. Construction is anticipated to start on October 14, 2024, and will last approximately six weeks.



**HARBOR
SECURITY
UPGRADES**



As part of the Port District's mission to enhance security throughout the harbor, six new security cameras have been installed in various locations.

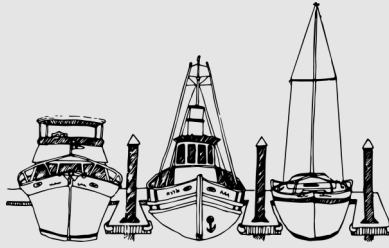
With these additional cameras, the District now has a total of 36 cameras throughout the harbor. The new cameras feature upgraded capabilities, including enhanced resolution and low-light functionality.

**FUEL DOCK
UPGRADES**

On August 8, 2024, the fuel dock was temporarily closed for an important upgrade to the electronic payment terminal. This update was essential for maintaining Payment Card Industry (PCI) compliance and ensuring the security of credit card transactions.



Additional fuel dock improvements, including electrical panel upgrades and replacement of all fuel hoses, are planned for early 2025. A temporary closure of the fuel dock will be required to facilitate these future projects. Additional information will be provided as we get closer to project commencement.



RETURN OF ALBACORE TUNA!

In late August, albacore tuna were finally within reach from the Santa Cruz Harbor! These prized fish haven't been locally accessible since 2013, with most fishing efforts taking place well offshore in northern California over the last decade. We're hopeful that favorable conditions will persist, leading to more landings out of Santa Cruz as we move into fall. Additionally, reports indicate that bluefin tuna fishing is starting to improve in the Half Moon Bay area, suggesting that schools may soon be moving toward the canyon edges of Monterey Bay.

ROCKFISH REGULATIONS

Beginning October 1, 2024, the rockfish depth limit in the Central Management Area (Monterey Bay) will be adjusted to outside 50 fathoms only. This limit will change again on November 1, and then again on December 1

Dates	Depth Limit
Oct. 1 – Oct. 31	50 fathoms offshore only fishery
Nov. 1 – Nov. 30	20 fathoms inshore only fishery
Dec. 1 – Dec. 31	50 fathoms offshore only fishery

Visit the California Department of Fish and Wildlife's [website](#) for more information on bag limits and species retention.

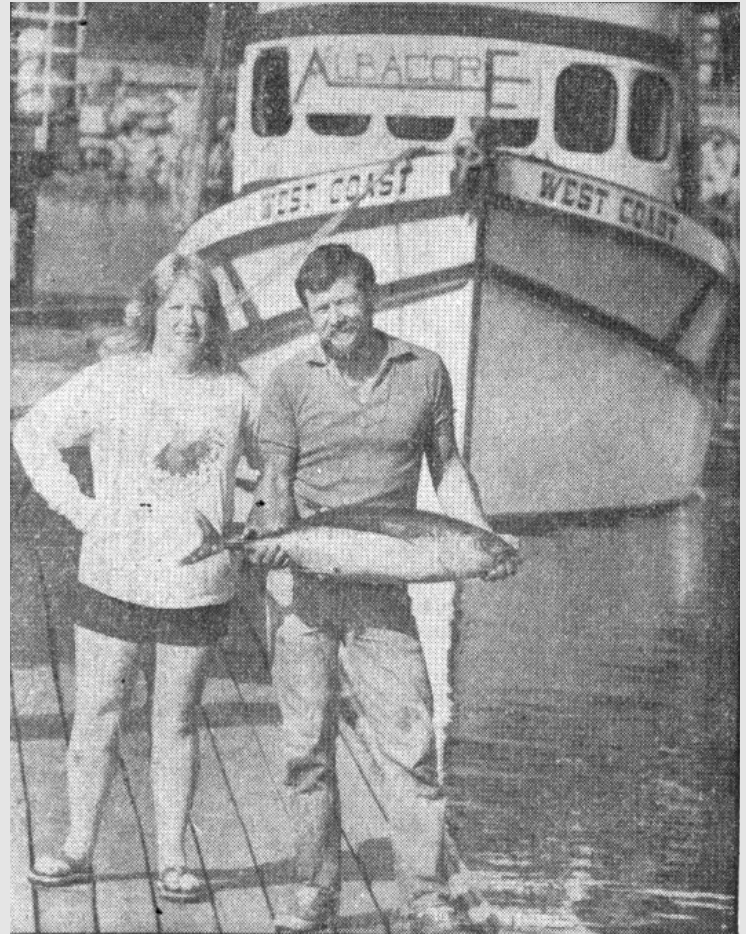
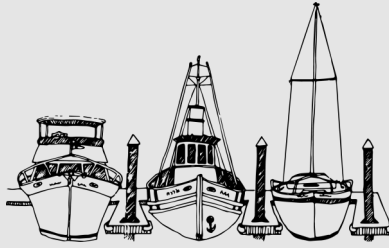


Photo by Bill Lovejoy / Sentinel 1982: Pam and Gil Groszmann with a 10-pounder





ANCHOVIES

Over the recent weeks, schools of bait fish, primarily anchovies, have been observed in abundance inside the harbor. While great for fishing, their presence can cause major issues inside the harbor. If fish remain inside the harbor for an extended period, they can use up all available oxygen and die suddenly in a “fish kill.” Harbor staff routinely monitors fish activity and dissolved oxygen levels using specialized equipment, and aerators are in place to boost oxygen when needed. Please keep a safe distance from active aerators and report any issues to the harbor office or patrol staff.

Since the construction of the harbor in 1964, there have been several notable fish kills. Anyone who has witnessed this phenomenon knows the serious issues it can cause and the clean-up effort it requires.



Harbor History Archive: Fish kill event at Santa Cruz Harbor

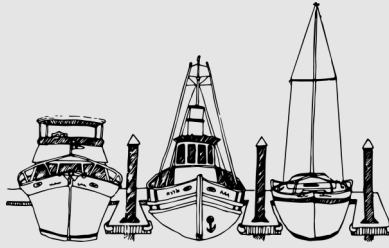
MILE BUOY SERVICE

On May 12, 2024, the 225' USCG cutter Alder performed routine maintenance on the Santa Cruz Lighted Whistle Buoy, commonly known as the Mile Buoy. The triennial service included inspecting, cleaning, and replacing parts of the buoy, chain, and ground tackle, ensuring it continues to function safely and effectively.

In late February 2024, the USCG proposed to remove the iconic buoy from service, but after receiving overwhelming public support in favor of keeping the aid to navigation in service, the proposal was withdrawn. The Coast Guard has indicated that every ten years, Aids to Navigation are evaluated for their utility, so its likely that another proposal for removal will occur in the future.



Photo courtesy of Niels Kisling, view the full image gallery online [here](#).



2024-25 DREDGE SEASON

Entrance Channel Dredging

Crews are preparing to move Twin Lakes from its off-season mooring in the north harbor to the entrance channel during the low tide in mid-November. In accordance with regulatory permits, entrance channel dredging is scheduled to take place from November 1 through April 30. Stay tuned for more information and schedule updates.

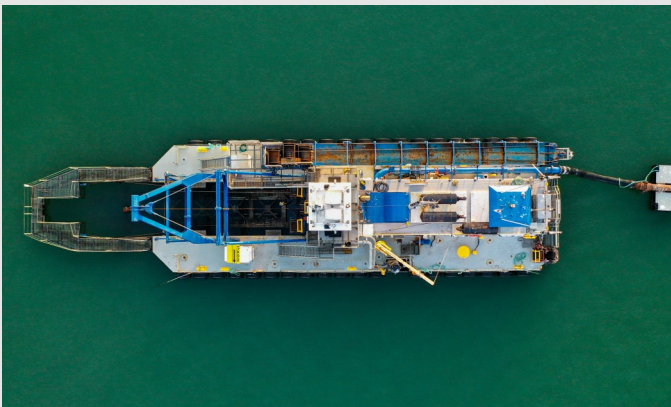
North Harbor Dredging

Last dredge season, the crew made significant progress deepening the north harbor slips and fairways. As a result, north harbor dredging is not planned for the 2024-25 season.



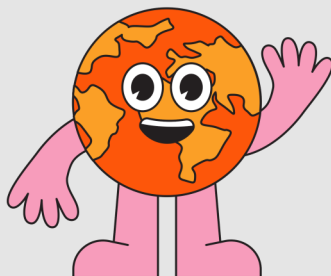
CATAMARAN STORAGE ATTENTION!

Catamaran storage renters, please remove your catamaran from beach storage starting October 11, 2024, and by no later than October 27, 2024. Launch ramp storage is available from October 2024 to March 2025, at the same rate, See the official notice [here](#).



GO GREEN!

[Sign up](#) to receive your monthly billing statements via email! It's a fast, convenient, and environmentally friendly way to get your monthly statements.

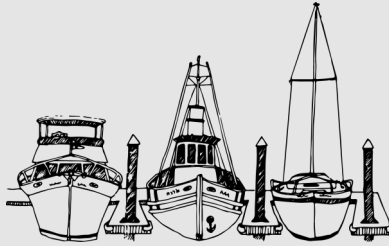


HARBOR EXCHANGE

Looking for a current listing of boats, sublets, or crew available or wanted at Santa Cruz Harbor?

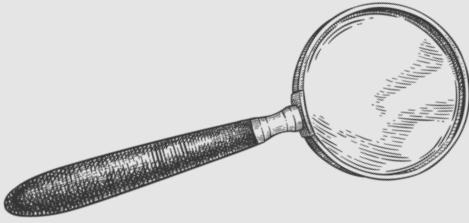
Harbor Exchange is a space for the public to advertise boating and subleasing opportunities at the Santa Cruz Harbor.

[Click here](#) to check out this free service!



FY24 AUDITED FINANCIAL STATEMENT

At its regular public meeting on September 24, 2024, the Port Commission accepted the Final FY24 Audited Financial Statement. Curious about the financial health of the Port District? You can find all the details on our [website](#)!



UPCOMING MEETINGS

Regular monthly Commission meetings are held on the fourth Tuesday of each month at 5:30 PM. Items for the agenda must be submitted to the Port District by the Tuesday prior to the meeting date of each month. For more information visit our [website](#).

REGULAR PUBLIC MEETING:

October 22, 2024, 5:30 PM

REGULAR PUBLIC MEETING:

November 26, 2024, 5:30 PM

REGULAR PUBLIC MEETING:

December ~ TBA

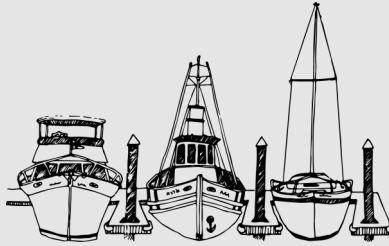
PORT DISTRICT'S SERVICE AND SPHERE OF INFLUENCE REVIEW

The Local Agency Formation Commission (LAFCO) recently updated the Port District's Service and Sphere of Influence review. The 2024 report provides key insights into the District's operations, services, and financial health, with recommendations for future operations. Read the full report on our [website](#).

HOLIDAY HOURS

The harbor office and boatyard will be closed at 12:30 PM on Wednesday, November 27. The harbor office and boatyard will remain closed on Thursday, November 28, and will resume regular operating hours on Friday, November 29.





RAISE A GLASS TO THE SEA: THE STORY BEHIND PORT AND STARBOARD

By Senior Deputy Harbormaster Haynes

Salty dogs may already know the origin of the terms *port* and *starboard*, but for the rest of you lubbers, here's some interesting trivia about where our nautical language comes from.

In ancient times, longboats were steered using an oar hung over the side of the vessel. Since most people are right-handed, the steering oar was positioned on the right side of the boat. As a result, the right side became known as the "stéor bord," Old English for "steer side."

Because the steering oar—or, in larger boats, the side-mounted rudder—made docking difficult on the right side, vessels were tied to shore on the left, or *larboard* (the loading side). However, since *larboard* and *starboard* sounded too similar, it became clearer to refer to the left side as the *port* side.

Starboard and *port* refer to a boat's sides. A handy way I've always remembered which is which: picture steering the boat with a bottle of port wine in your hand. I'm right-handed, so I steer with my right hand and hold my bottle of port in my left. Conveniently, port wine is red—just like the red navigation light on the port side of the boat!



32ND ANNUAL DAY ON THE BAY REGATTA

The Santa Cruz Yacht Club hosted the 32nd Annual Day on the Bay Regatta, benefiting Big Brothers Big Sisters, on August 11, 2024. The event was a success, featuring excellent weather and a record of forty vessel entries. An estimated \$30,000 was raised to support local youth programs.

