



In This Issue

[Announcements](#)

[Tribute to Norman S. Lezin](#)

[Dredging Operations](#)

[Best Practices Guide to Minimize Whale Entanglement Risk](#)

[Harbor Entrance Conditions](#)

[Employment Opportunities](#)

[Commission Meeting Schedule](#)

[Current Fuel Prices](#)

HARBOR ENTRANCE CONDITIONS

Boaters are advised to be cautious when transiting the harbor entrance, which is shallow in some areas due to recent heavy surf and swell conditions. The shallow conditions may cause dangerous breaking surf at the harbor entrance, especially during low tide.

Prior to transiting the entrance, please view the most current [entrance sounding](#). All mariners are advised to check the weather and tides and know what their vessel draws to ensure safe transit.

NEWSLETTER

February 2018

ANNOUNCEMENTS

2018 PARKING STICKERS

2018 parking stickers will be enforced starting February 1, 2018. The slip licensee of record may pick up the parking stickers at the harbor office. Be sure to follow all parking policies to avoid citation.

2018 WAITING LIST RENEWALS

It's not too late to pay your 2018 waiting list renewal! To avoid late fees and interest, payments must be received by February 20, 2018.

If you have any questions regarding your placement on the waiting list, please contact the harbor office at (831) 475-6161.

SIGN UP FOR TSUNAMI ALERTS!

The National Oceanic and Atmospheric Administration (NOAA) Tsunami Program provides safety information and the most current tsunami advisories and alerts in order to minimize the impacts of tsunamis. The Santa Cruz Port District encourages all boaters to sign up for tsunami alerts through NOAA's [website](#).

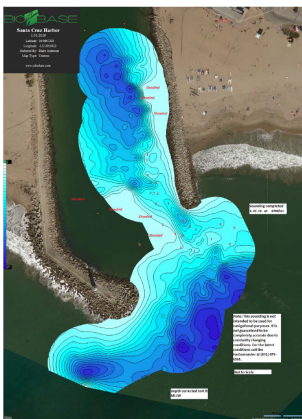
If you would like to receive tsunami alerts from the National Tsunami Warning Center (NTWC) via **text message**, you can send "**follow NWS_NTWC**" to **40404**.

TRIBUTE TO NORMAN S. LEZIN

Port Commissioner, 1973 - 1984

Norman S. Lezin passed away on January 9, 2018, at the age of 93 in Santa Cruz, California. Norm was a strong advocate of the construction of the harbor and later served on the Santa Cruz Port Commission from 1973 to 1984. He was a lifelong member of the Santa Cruz Yacht Club and started the tradition of the Wednesday Night Sailboat Races! Santa Cruz Harbor offers its condolences to Norm's family, friends and the entire community who embraced his spirit.

Please click [here](#) to view Norman's memorial website.



[Download Current Entrance Sounding](#)

EMPLOYMENT OPPORTUNITIES

Join our team at Santa Cruz Harbor!

Seasonal Part-Time Employment

Santa Cruz Port District is seeking seasonal, part-time employees to assist with parking and launch ramp control, fuel sales, water taxi, passenger shuttles, and other customer-service related duties for Spring - Summer 2018.

Click [here](#) for complete job descriptions and application materials.

PORT COMMISSION MEETING SCHEDULE

FEBRUARY

[Special Public Budget Session](#)

Tuesday, February 13, 2018
7 PM

[Regular Public Session](#)

Tuesday, February 27, 2018
7 PM

MARCH

[Regular Public Session](#)

Tuesday, March 27, 2018
7 PM

CURRENT FUEL PRICING

DREDGING OPERATIONS

ENTRANCE CHANNEL DREDGING

Harbor staff is working to address the sand and debris that was deposited in entrance channel during the recent storms and surge event. The dredge crew will be extending their work schedule in February to ensure that the entrance channel remains open.

Please contact Harbor Patrol on VHF Channel 9 or call the Santa Cruz Harbor office at (831) 475-6161 for the latest conditions.

NORTH HARBOR DREDGING

Crews have made progress deepening the X-J channel and are moving north toward the culvert area. Crews intend to dredge the area at the northernmost end (near the culverts) with the Toyo pump assisted by *Squirt*. Dredging of the sandy areas in the north harbor is permitted through April 30, 2018.

BEST PRACTICES GUIDE TO MINIMIZE WHALE ENTANGLEMENT RISK

The National Marine Fisheries Service (NMFS) has reported an increase in whale entanglements in crab fishing gear over the last few years. In response to this finding, the California Dungeness Crab Fishing Gear Working Group has created the following best practices guide to help prevent whale entanglements:

- **No excess lines should be floating at the surface.** Floating line should only be between the main buoy and trailer.
- **When changing set location across depths, adjust the length of trap lines** by adjusting shots (i.e., measured length of line) to maintain taut vertical lines.
- **Avoid setting gear in the vicinity of whales** whenever possible.
- **Maintain gear to ensure lines and buoys are in good working condition** and will not break under natural conditions causing gear to become lost or irretrievable. Lost gear contributes to marine debris and increases the risk of whale entanglements.
- **All gear should be clearly marked** consistent with applicable regulation. All gear should be maintained so markings are clearly legible to facilitate correct identification of the origins of the gear involved in entanglements.
- **Use the minimum amount of scope** required to compensate for tides, currents and weather, as necessary. Whales are more likely to become entangled with slack lines, which can potentially create a "floating snare".

Please click [here](#) for more information and resources provided by the California Dungeness Crab Fishing Gear Working Group.

Gasoline: \$3.99
Diesel: \$3.29
Commercial Diesel: \$3.10



Santa Cruz Port District | | scpd@santacruzharbor.org | <http://www.santacruzharbor.org>
135 5th Avenue
Santa Cruz, CA 95062
(831) 475-6161

Copyright © 2012. All Rights Reserved.



Santa Cruz Port District | 135 5th Avenue | Santa Cruz | CA | 95062